

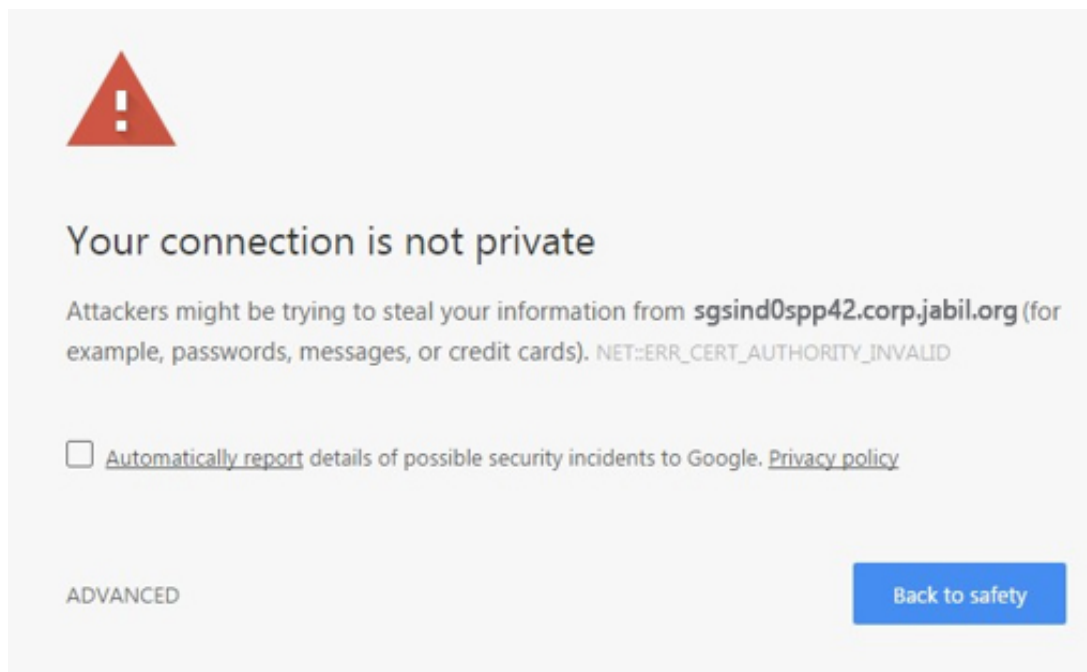
How to Permanent Trust Jabil SSL

1. Login to SPP Website

Testing Server - <https://sgsind0spp42.corp.jabil.org/spp/>

Production Server - <https://sgsind0spp01.corp.jabil.org/spp/>

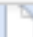
2. If your browser prompts for certificate error as below, please continue reading, else you can check the English / Chinese user manual for how to use the new login method.



- If you encounter this error message, that means your computer doesn't have Jabil own CA signed root certificate, if you visit any Jabil website with **https** and signed by **Jabil Enterprise CA**, you will still encounter this error. To permanent fixed this, simply following methods as below for Mac & Windows.

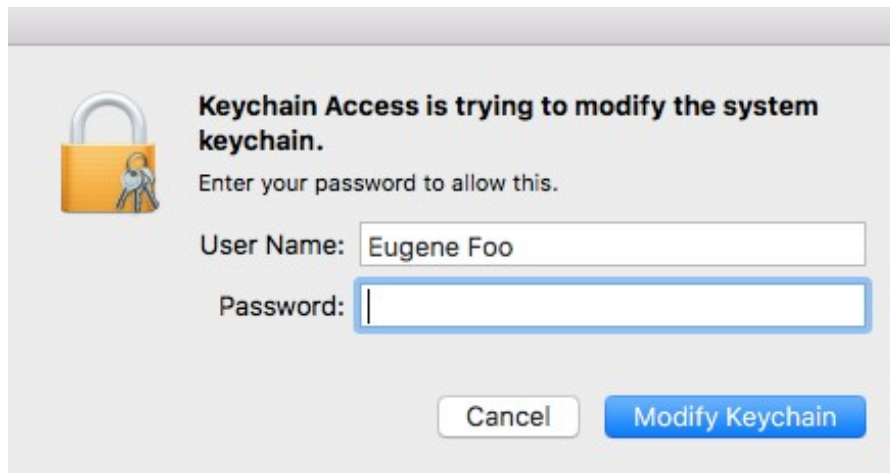
Permanent Trust For Jabil Root Certificate Authority (CA)

- Download the zip file from: <https://sgsind0spp01.corp.jabil.org/SPP/content/ipa/Jabil.zip>
- Unzip it and double click the **.cer** file.

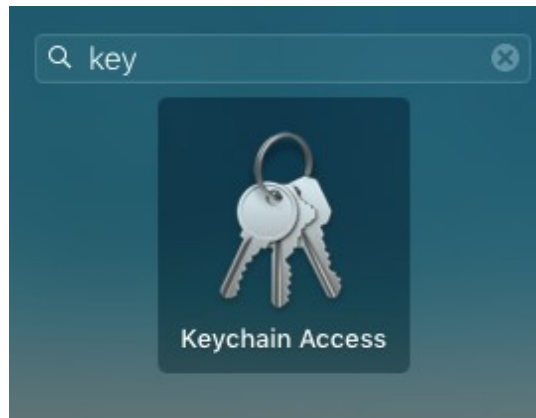
Name	Size	Compressed	Time
 Jabil.cer	1 KB	1 KB	12/27/16 11:47 AM

Mac Installation

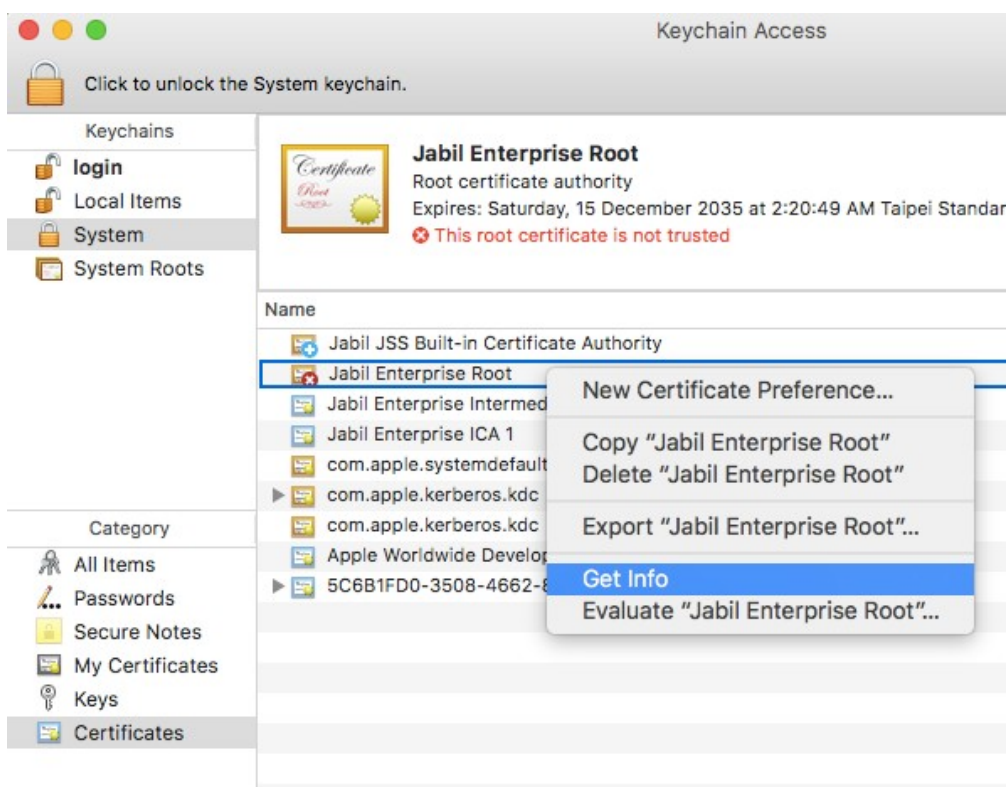
- Mac users simply just enter your computer password when prompt for installation.



- After installation complete, please go to **Launchpad > Keychain Access**.



- Navigate to **Keychain = System, Category = Certificate** on left panel, right click **Jabil Enterprise Root** and click **Get Info**.

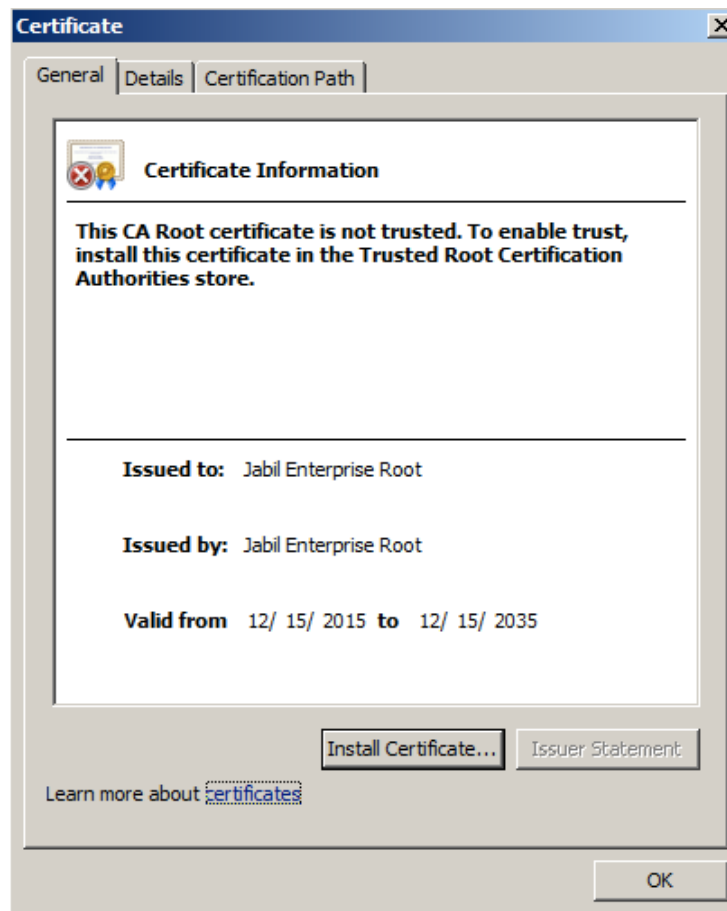


- Choose **Always Trust**, and click **Close** button, it will prompt you for **password verification**, enter your password then you are done.



Windows Installation

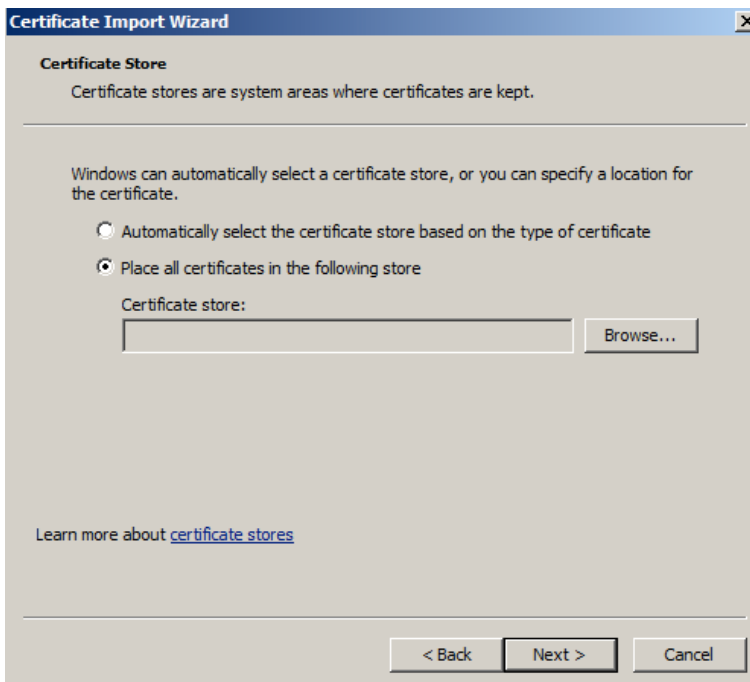
- Click **Install Certificate**.



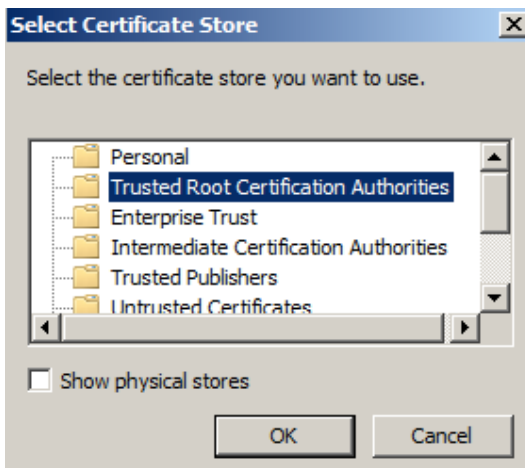
- Click Next.



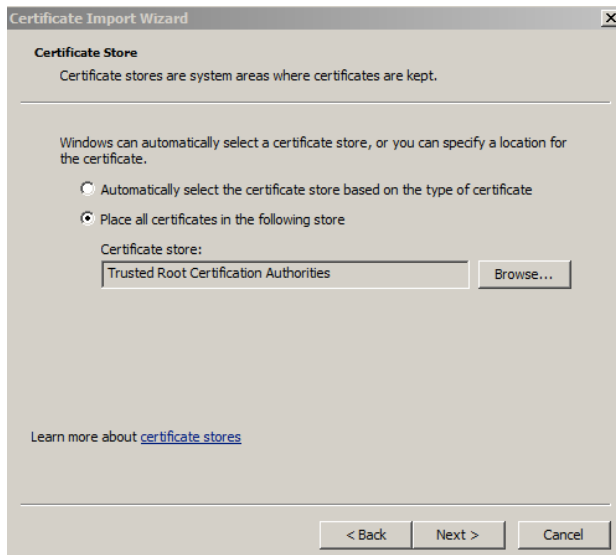
- Choose the second options and click Browse.



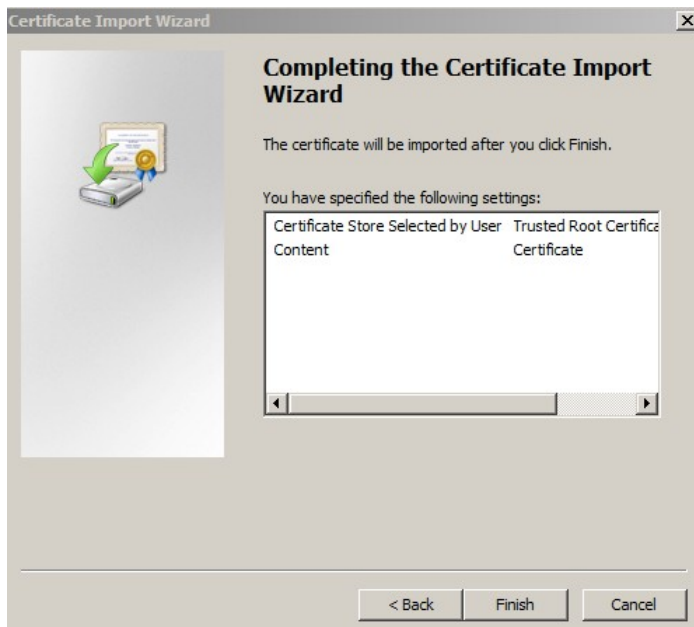
- Select Trusted Root Certification Authorities, then click OK.



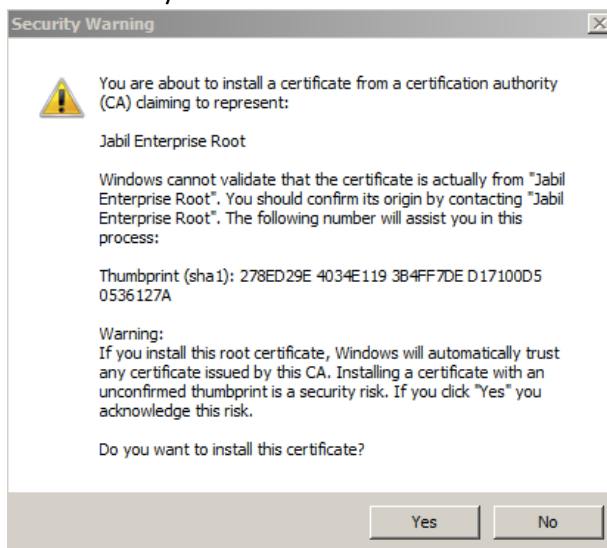
- Click Next.



- Click Finish.



- Click OK and you are done.



*Please note that this trust action only need to perform **one** time, after that it will be permanent trusted for all HTTPS traffic that signed with Jabil Certificate Authority (CA).